



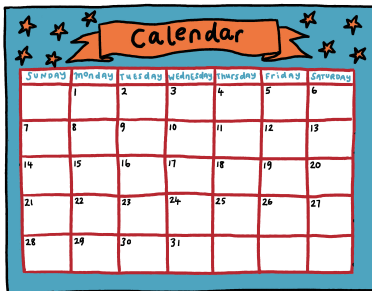
What:

Keep this simple. Write the name of your Fun Palace in clear writing.



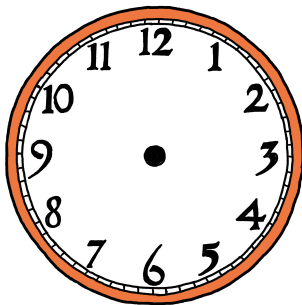
Where:

The location. Again keep this simple, listing the address and postcode.



Date:

The date of your Fun Palace.



Time:

The start time of your Fun Palace. (You can also draw the hands on the clock to illustrate this).



Activities:

Here write a simple, bulleted list of what is happening at your Fun Palace.



Accessibility info:

Here you can list what kinds of access are available.

The symbols opposite (top left to bottom right) are:

- A hearing loop is available (list locations).
- Access for people with low vision
- Audio described
- BSL interpreted
- Access for Individuals who are blind or have low vision
- Wheelchair accessible
- Closed captioning
- The Information Symbol indicates the availability of required information that is specific to the location where it the symbol is found. For instance, the information symbol might lead the way to other access support, eg large print texts, audio devices or guided tours.



How:

Here you can let people know how they can come to your Fun Palace - whether they need to book online beforehand, or just turn up on the day.